

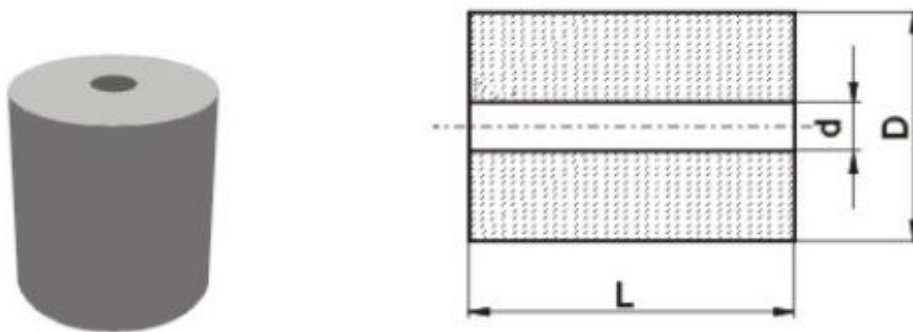
## Cold Forging Dies



### Properties of grades and application recommended.

Grade	Density (g/cm <sup>3</sup> )	Hardness (HRA)	TRS (MPa)	Application recommended
YG20C	13.5	83.5	3300	Dies for wear resistant or impact resistant application.
YG22C	13.3	83.0	3500	Nut forming dies and high impact resistance forging dies.
YG25C	13.1	82.5	3600	Stainless bolt header dies and rollers.

### Heading die blanks for making standard bolts.

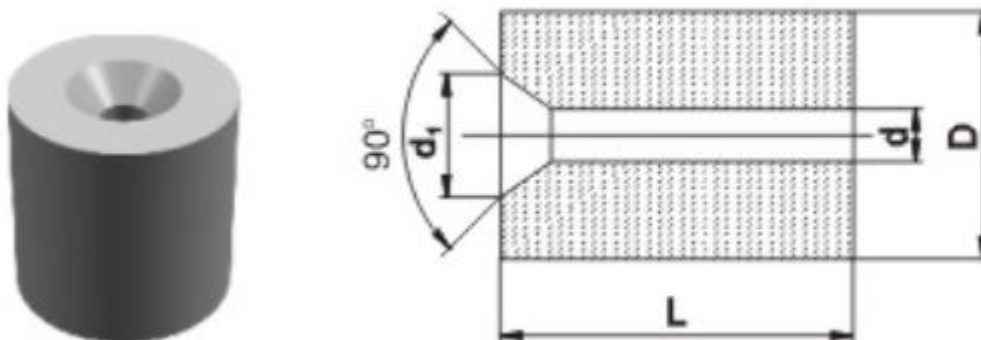


Type	Dimension			Application range
	d	D	Range of L	
GH00710-	0.7	10	12-20	M1
GH01010-	1.0	10	12-20	M1.5-M2

GH01013-	1.0	13	15-40	M1.5-M2
GH01213-	1.2	13	15-40	M1.5-M2
GH01510-	1.5	10	12-25	M2
GH01516-	1.5	16	15-45	M2
GH01813-	1.8	13	12-45	M2.5
GH01816-	1.8	16	20-45	M2.5
GH02113-	2.1	13	15-30	M3
GH02116-	2.1	16	25-45	M3
GH02316-	2.3	16	15-45	M3
GH02522-	2.5	22	20-60	M3
GH02813-	2.8	13	15-30	M4
GH02816-	2.8	16	25-40	M4
GH02818-	2.8	16	20-50	M4
GH02820-	2.8	20	20-50	M4
GH02822-	2.8	22	20-60	M4
GH02825-	2.8	25	20-60	M4
GH3216-	3.2	16	15-45	M4
GH3218-	3.2	18	15-50	M4
GH3616-	3.6	16	20-50	M5
GH3618-	3.6	18	20-60	M5
GH3822-	3.8	22	20-40	M5
GH3830-	3.8	30	50-60	M5
GH4218-	4.2	18	20-60	M5
GH4616-	4.6	16	20-30	M6
GH4622-	4.6	22	20-60	M6
GH5422-	5.4	22	20-60	M6
GH6422-	6.4	22	20-60	M8
GH6425-	6.4	25	20-60	M8
GH6430-	6.4	30	20-60	M8
GH7230-	7.2	30	20-50	M10
GH8230-	8.2	30	25-60	M10
GH8235-	8.2	35	20-60	M10
GH9230-	9.2	30	20-60	M12

GH10030-	10.0	30	30-60	M12
GH10035-	10.0	35	20-60	M12
GH11235-	11.2	35	20-60	M12
GH11240-	11.2	40	30-60	M12
GH11835-	11.8	35	20-60	M14
GH11840-	11.8	40	20-30	M14
GH13235-	13.2	35	20-60	M14
GH13240-	13.2	40	25-50	M14
GH13835-	13.8	35	25-60	M16
GH13840-	13.8	40	25-35	M16
GH14445-	14.4	45	25-60	M18
GH15445-	15.4	45	30-50	M18
GH16445-	16.4	45	25-60	M20
GH17445-	17.4	45	25-60	M20
GH19445-	19.4	45	25-55	M22
GH21050-	21.0	50	25-55	M24
GH24460-	24.4	60	30-50	M27

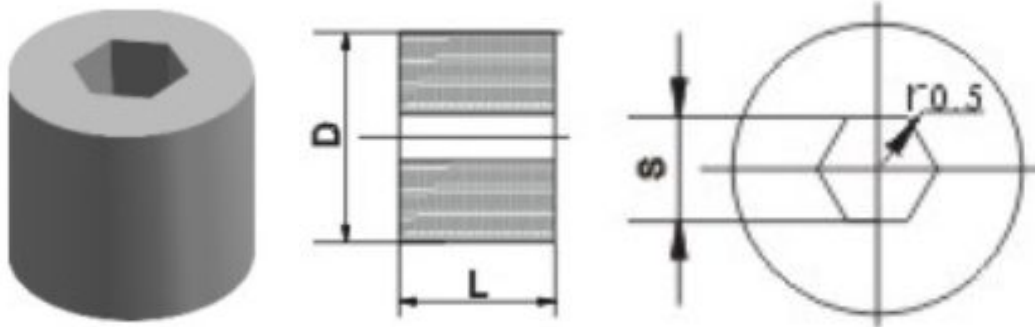
**Type BC dies blanks with sink**



Type	Dimension				Application range
	d	D	L	d 1	
GH281330-	2.8	13	30	7	M4
GH381630-	3.8	16	30	8.5	M5
GH381640-	3.8	16	40	8.5	M5

GH382250-	3.8	22	50	8.5	M5	
GH461630-	4.6	16	30	10.5	M6	
GH462250-	4.6	22	50	10.5	M6	
GH643030-	6.4	30	30	15	M8	
GH643055-	6.4	30	55	15	M8	
GH823655-	8.2	36	55	18	M10	
GH1004055	10.0	40	55	22	M12	
GH1184555	11.8	45	55	25	M14	
GH1386060	13.8	60	60	29	M16	

**Type BF internal hexagonal die blanks.**



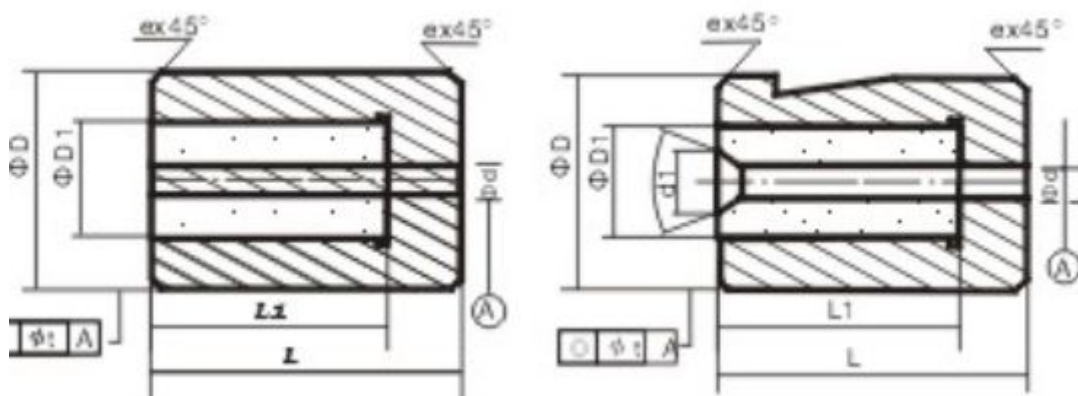
Type	Size			Application range
	s	D	L	
GH261210-	2.6	12	10	M1.6
GH341210-	3.4	12	10	M2
GH441612-	4.4	16	12	M2.5
GH481612-	4.8	16	12	M3
GH632016-	6.3	20	16	M4
GH722416-	7.2	24	16	M5
GH923016-	9.2	30	16	M6
GH1213210-	12.1	32	10	M8
GH1213220-	12.1	32	20	M8
GH1504024	15	40	24	M10
GH1504030	15	40	30	M10
GH1704430	17	44	30	M12

GH1995236	19.9	52	36	M14
GH2285842	22.8	58	42	M16
GH2817250	28.1	72	50	M20

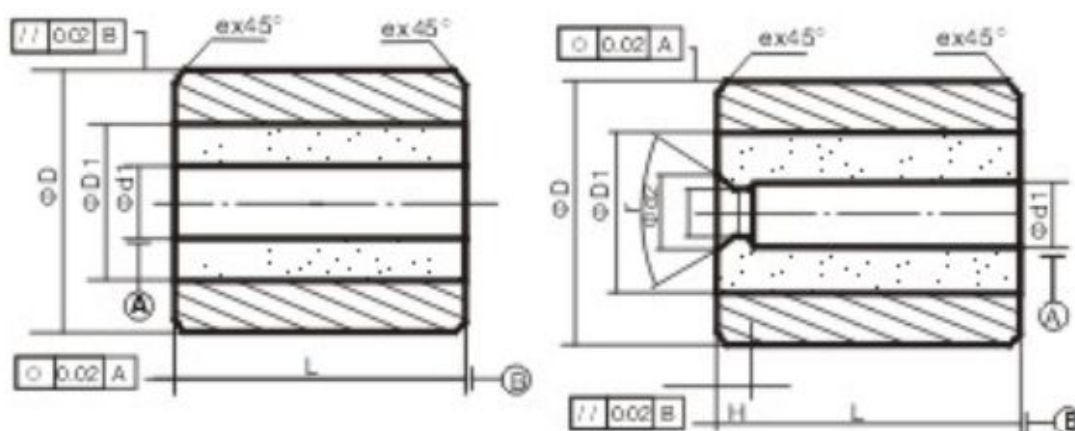
**Cold heading and cold punching dies**

Suitable for cold heading and cold punching standard parts, screws and rivets of copper, aluminum, steel and alloy steel, they are available in the frequently used types of flat headed cold heading dies sunk cold heading dies one operation-punching and ejection dies rod reducing dies.

The sketches and sizes are as follows:

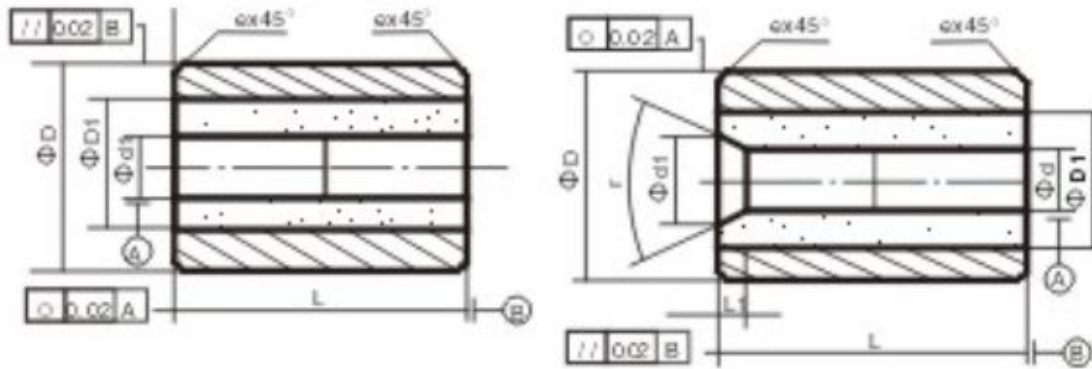


Type	d	L
Flat headed	2.0-6.0	25-60
Sunk	2.0-5.0	25-50



Type	d	L

One operation punching and ejection dies	10.0-25.0	100-130
Rod reducing dies	10.0-25.0	100-130



Type	d	L
One operation punching and ejection dies	7.0-15.0	30-100
Rod reducing dies	7.0-15.0	30-100

**All dimensions are in mm.**

**We can produce according to customer's request.**